

Postal Code 78731

Residential Statistics



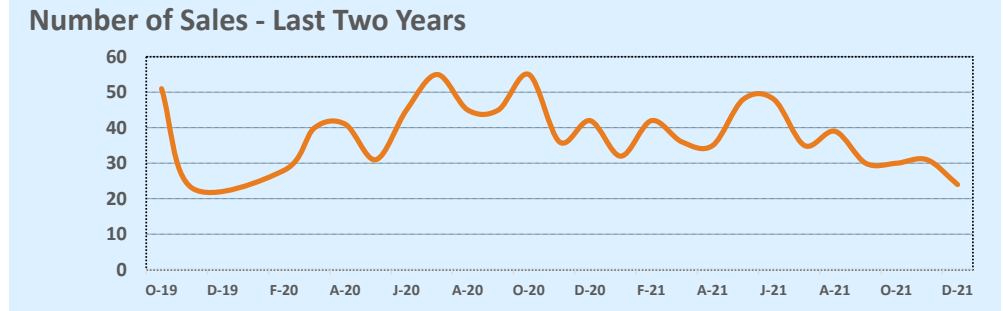
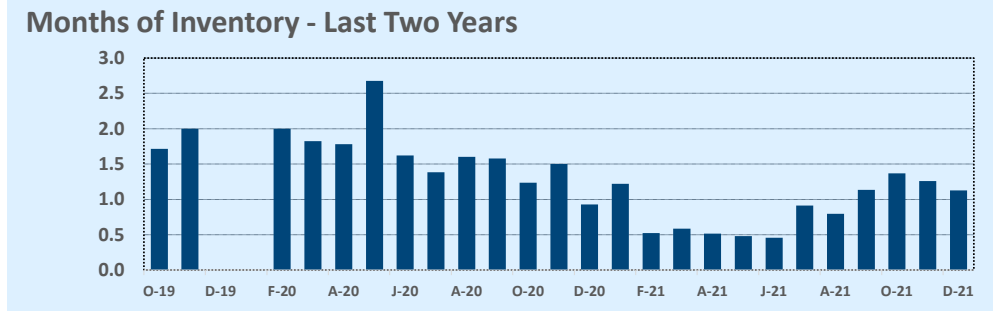
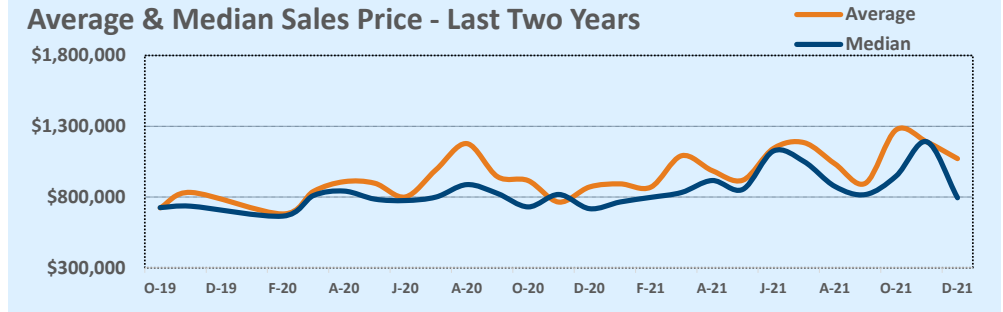
November 2021

Listings	This Month			Year-to-Date		
	Nov 2021	Nov 2020	Change	2021	2020	Change
Single Family Sales	13	23	-43.5%	274	337	-18.7%
Condo/TH Sales	11	19	-42.1%	156	149	+4.7%
Total Sales	24	42	-42.9%	430	486	-11.5%
New Homes Only	--	1	--	6	13	-53.8%
Resale Only	24	41	-41.5%	424	473	-10.4%
Sales Volume	\$25,704,538	\$36,575,298	-29.7%	\$447,420,653	\$437,417,484	+2.3%
New Listings	15	24	-37.5%	441	546	-19.2%
Pending	26	11	+136.4%	44	428	-89.7%
Withdrawn	1	3	-66.7%	35	51	-31.4%
Expired	--	--	--	--	--	--
Months of Inventory	1.1	0.9	+21.2%	N/A	N/A	--

Price Range	This Month			Year-to-Date		
	New	Sales	DOM	New	Sales	DOM
\$149,999 or under	--	--	--	1	1	1
\$150,000- \$199,999	--	--	--	6	4	21
\$200,000- \$249,999	--	--	--	16	7	9
\$250,000- \$299,999	1	4	12	21	18	22
\$300,000- \$349,999	--	1	4	16	23	14
\$350,000- \$399,999	2	1	31	19	15	13
\$400,000- \$449,999	1	--	--	6	4	7
\$450,000- \$499,999	--	2	7	8	11	10
\$500,000- \$549,999	--	1	38	7	10	38
\$550,000- \$599,999	--	1	12	13	12	86
\$600,000- \$699,999	--	--	--	24	20	54
\$700,000- \$799,999	2	2	29	35	44	31
\$800,000- \$899,999	2	2	10	36	42	23
\$900,000- \$999,999	2	1	13	43	28	8
\$1M - \$1.99M	4	6	25	160	167	32
\$2M - \$2.99M	1	2	43	20	17	17
\$3M+	--	1	31	10	7	73
Totals	15	24	21	441	430	29

Average	This Month			Year-to-Date		
	Nov 2021	Nov 2020	Change	2021	2020	Change
List Price	\$1,045,285	\$888,413	+17.7%	\$995,591	\$913,965	+8.9%
List Price/SqFt	\$435	\$362	+20.3%	\$406	\$346	+17.2%
Sold Price	\$1,071,022	\$870,840	+23.0%	\$1,040,513	\$900,036	+15.6%
Sold Price/SqFt	\$450	\$357	+26.0%	\$427	\$343	+24.4%
Sold Price / Orig LP	102.4%	96.4%	+6.2%	105.0%	97.7%	+7.4%
Days on Market	21	87	-76.2%	29	45	-36.3%

Median	This Month			Year-to-Date		
	Nov 2021	Nov 2020	Change	2021	2020	Change
List Price	\$787,000	\$712,495	+10.5%	\$895,000	\$799,000	+12.0%
List Price/SqFt	\$402	\$358	+12.2%	\$382	\$327	+17.0%
Sold Price	\$794,500	\$717,495	+10.7%	\$904,000	\$800,000	+13.0%
Sold Price/SqFt	\$401	\$353	+13.6%	\$405	\$324	+25.0%
Sold Price / Orig LP	100.0%	96.5%	+3.6%	103.0%	99.0%	+4.0%
Days on Market	11	34	-68.7%	6	12	-47.8%



Based on information from the Austin Board of REALTORS® (alternatively, from ACTRIS). Neither the Board nor ACTRIS guarantees or is in any way responsible for its accuracy. The Austin Board of REALTORS®, ACTRIS and their affiliates provide the MLS and all content therein "AS IS" and without any warranty, express or implied. Data maintained by the Board or ACTRIS may not reflect all real estate activity in the market.